



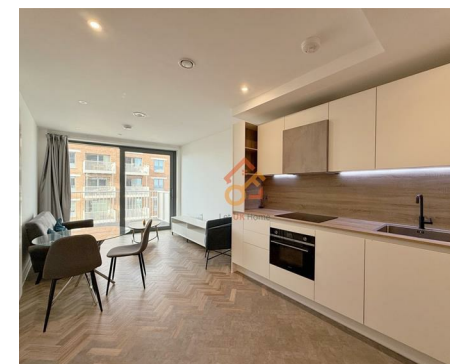
Let **UK** Home

1 Bedrooms

Flat

Located in London

£2,000 Per Month



info@letukhome.co.uk

<https://www.letukhome.co.uk/>

01795 358 886



11 Makers Yard London

E3 3YP



Let UK Home are excited to offer this spectacular one bedroom apartment in the heart of Skyline Apartments part of the Three Waters.

The flat features a well-appointed reception room with access to a private balcony, perfect for entertaining guests or enjoying a quiet evening in. With one generously sized bedroom, there is ample room for relaxation and privacy. The modern bathroom adds convenience, ensuring that morning routines and evening unwinding can be done with ease.

Residents of this exceptional development will benefit from concierge service, cinema room, leisure facilities and beautiful communal courtyards.

Skyline Apartments is situated in a lively neighbourhood, offering a blend of urban living and community charm. Residents will appreciate the proximity to local amenities, including shops, cafes, and parks, all within easy reach. The excellent transport links nearby make commuting to central London a breeze, allowing you to enjoy the best of city life while returning to your peaceful retreat.

Within walking distance to Bromley-by-Bow Underground Station (District Line and Hammersmith & City Line) and Devons Road DLR Station, you can take the metro or bus to reach Canary Wharf, Liverpool Street, and other parts of London directly.

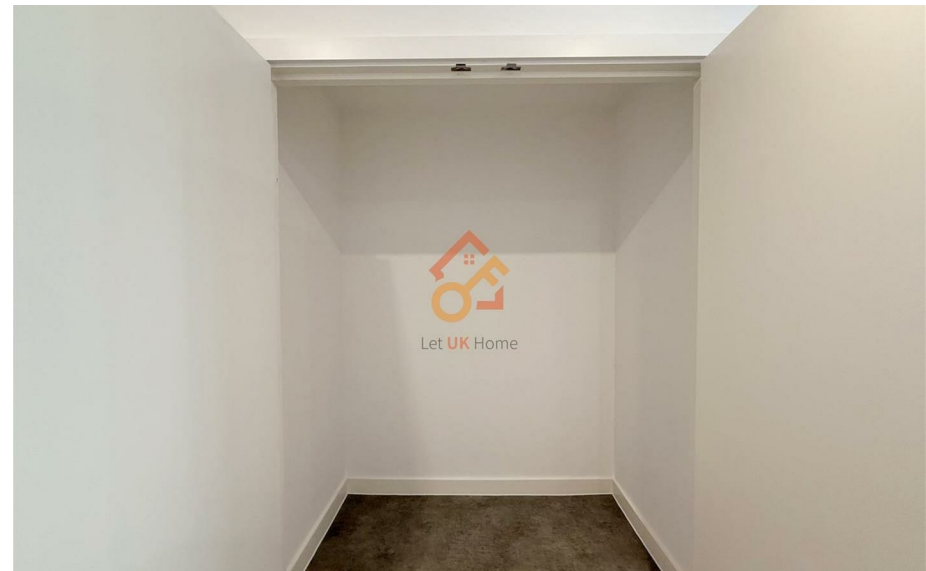
Within walking distance or a short commute, you can reach UCL School of Management, UCL East Campus, and Queen Mary White City Campus. Public transportation also allows quick access to UCL, London School of Economics (LSE), and King's College London (KCL).

11 Makers Yard London

£2,000 Per Month

- 14th Floor
- Cinema Room
- Communal Courtyard
- EPC Rating: B

- Concierge Service
- Leisure Facilities
- Children's Playground





Let **UK** Home

3F 2 Eastbourne Terrace
 Paddington
 London
 W2 6LG

01795 358 886

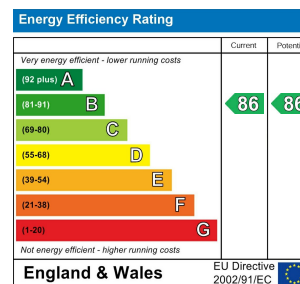
info@letukhome.co.uk



Council Tax Band: D

Local Authority:

Agents Note: Whilst every care has been taken to prepare these particulars, they are for guidance purposes only. All measurements are approximate and are for general guidance purposes only and whilst every care has been taken to ensure their accuracy, they should not be relied upon and potential buyers/tenants are advised to recheck the measurements.



<https://www.letukhome.co.uk/>